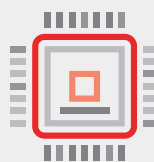


DATA CENTERS

SAFE, STRATEGIC LOCATION

16%
LOWER

The cost of doing business is 16% lower than the national average.
— *Moody's Analytics*



Large pre-qualified, development-ready data center sites.

RELIABLE, RENEWABLE UTILITIES



The average industrial electricity rate is 5.67 cents per kilowatt-hour.
— *Edison Electric Institute*



Major fiber backbone and long-haul data access.



Des Moines Water Works has 110-million-gallon per day capacity and 5 billion gallons of reservoir storage.

MidAmerican Energy Company has invested nearly

\$12 BILLION

in wind energy development, which will generate wind energy equal to 100% of annual customer sales in Iowa by the end of 2021.



Alliant Energy is investing

\$2 BILLION

in wind energy.

HIGH-SPEED TAX BENEFITS



For investments of \$200 million or more, equipment directly connected to data center computers is exempt from property tax. Also, there is a sales tax exemption on equipment, electricity and back-up fuel.



No sales or use tax on computers used in the processing of data. No personal property tax on computers. Tax abatement or rebate for new construction or building improvements.

50%
REBATE

Investments of \$1 million or more receive a 50% sales tax rebate on electricity and back-up fuel. Investments of \$10 million or more also receive a 50% sales tax rebate on equipment directly connected to the data center.

APPLE

Apple has purchased 2,000 acres and plans to build a \$1.4 billion, 400,000-square-foot data center in Waukee. Construction on the data center is expected to start in the near future.

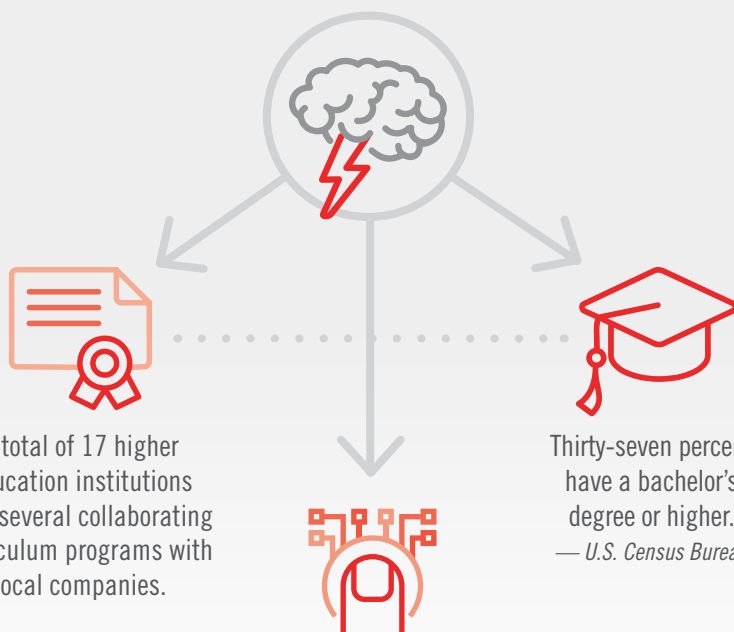
FACEBOOK

Since 2013, Facebook has invested more than \$3 billion in four data centers in Altoona totaling 2.5 million square feet. In 2019, Facebook broke ground on a fifth data center. This building will add another 1 million square feet to the Altoona Campus.

MICROSOFT

Microsoft has invested \$2 billion in its first two data centers in Iowa and has begun construction of a third data center in West Des Moines with an estimated 1.7 million square feet.

INNOVATION-DRIVEN WORKFORCE



A total of 17 higher education institutions with several collaborating curriculum programs with local companies.

Thirty-seven percent have a bachelor's degree or higher.
— U.S. Census Bureau

>35,700 people in high-tech industries.
— JobsEQ

MIKE SWESEY

Senior Vice President of Economic Development p: (515) 286-4997 e: mswesey@DSMpartnership.com